



Effect of Reinforcement on Mechanical Properties of Al7475/Nbc/Mos2 Metal Matrix Composites

B G Chandru, S. Channabasavaraj and A Thimmana Gouda

EasyChair preprints are intended for rapid dissemination of research results and are integrated with the rest of EasyChair.

March 1, 2023

EFFECT OF REINFORCEMENT ON MECHANICAL PROPERTIES OF AL7475/NbC/MoS₂ METAL MATRIX COMPOSITES

CHANDRU B.G¹, DR.S.CHANNABASAVARAJ², DR.A.THIMMANA GOUDA³

¹*Assistant Professor, Department of Mechanical Engineering R.Y.M Engineering College, VTU
RC, Bellary, Karnataka, India.*

²*Professor and Head, Department of Mechanical Engineering, R.R.Institute of Technology,
Bangalore, Karnataka India.*

³*Professor Department of Mechanical Engineering R.Y.M Engineering College, Bellary,
Karnataka, India*

ABSTRACT

Aluminum metal matrix composites (AMMCs) have significant applications in aviation, auto and military, because of their high solidarity to wear proportion, resolution, light weight, great wear resistance and improved thermal properties. Artistic particles, for example, Al₂O₃, SiC, TiC, B₄C are the most generally utilized materials for strengthening aluminum. In this paper the proposed work is to investigate the effect of reinforcement on mechanical properties of Al7475/ NbC/MoS₂ Metal Matrix Composites by fabricating the composites using liquid metallurgical technique by varying the weight percentage (wt%) of reinforcement Niobium Carbide (NbC) and Molybdenum disulphide(MoS₂) from 2 to 10% by intervals of 2wt%.

Key words: *Alluminium Alloy(Al7475), Niobium Carbide(NbC), Molybdenum disulphide(MoS₂).*

1. Introduction

Nowadays, composites are profoundly thriving as the replacement of ferrous alloys. The Aluminum manifested into a great substitute due to its properties like lightweight, low density, high strength, and corrosion resistance. The proposed work is to fabricate and determine the mechanical properties such as hardness, fracture toughness of Al7475+NbC+ MoS₂ composites. The composites were developed by Liquid Metallurgy technique.

2. Material selection

2.1 Matrix Material: Aluminium Alloys

Al7475 is a precipitation solidifying aluminum composite, containing magnesium and silicon as its major alloying components. Al7475 alloys have great mechanical properties with ductility and furthermore they are effectively weldable composites. Al7475 will be utilized as Matrix composite because of its amazing casting properties, sensible strength and its reasonableness for large scale manufacturing. Because of their great properties they discover numerous applications in various fields.



Fig.1 Al7475 Ingots

Table.1 Chemical Composition of Al7475 Alloy

Element		Composition
Silicon	Si	0.12
Iron	Fe	0.15
Copper	Cu	2.6
Manganese	Mn	0.10
Magnesium	Mg	2.6
Chromium	Cr	0.04
Zinc	Zn	6.5
Aluminium (Balance)	Al	87.89

2.2 Reinforcement Materials

Niobium Carbide (NbC) and Molybdenum disulfide (MoS₂) are individually used with a varying wt. % of 2, 4, 6, 8, and 10%.

Figure 2.1 Niobium Carbide (NbC) powders of 30 micron size, Fig 2.2 show the SEM image of NbC powders. Fig 2.3 Molybdenum disulfide (MoS₂) powders.



Fig 2.1 Niobium Carbide (NbC) powders

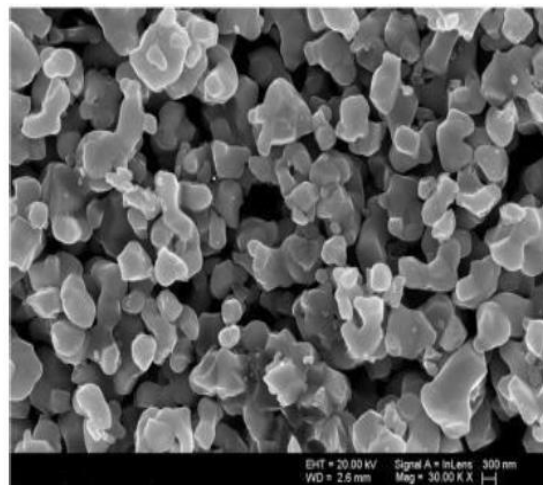


Fig 2.2 SEM image of NbC powders



Fig 2.3 Molybdenum disulfide (MoS₂) powders

2.3 Fabrication of the Composites

The proposed work is to fabricate and determine the mechanical properties such as hardness, fracture toughness of Al7475+NbC+ MoS₂ composites. The composites were developed by Liquid Metallurgy technique.



Fig 2.4 Casted specimens

3. Results and Discussions

3.1 Hardness Test of Composites with NbC and MoS₂ (ASTM STANDARD E10)

The hardness test is conducted by using the Brinell hardness tester as per the ASTM E10.

Sl No	Composition	Brinell Hardness
1	AL7475Alloy	61.7
2	AL7475 +2%NbC	73.4
3	AL7475 +4%NbC	82.3
4	AL7475 +6%NbC	88.7
5	AL7475 +8%NbC	99.3
6	AL7475 +10%NbC	94.5

Table 2. Brinell hardness number for various compositions of AL7075/NbC composites.

Sl No	Composition	Brinell Hardness
1	AL7475Alloy	61.7
2	AL7475+2%MoS ₂	65.65
3	AL7475+4%MoS ₂	71.25
4	AL7475+6%MoS ₂	74.25
5	AL7475+8%MoS ₂	76.25
6	AL7475+10%MoS ₂	72.22

Table 3. Brinell hardness number for various compositions of AL7075/ MoS₂ composites.

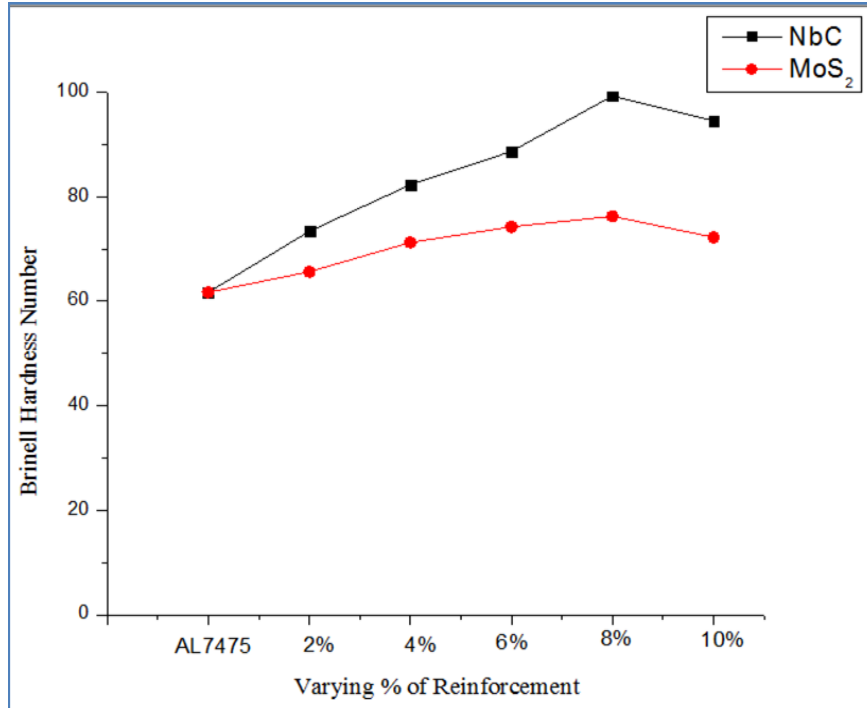


Fig 3.1 shows the BHN values for varying percentage of NbC and MoS₂ reinforcement

3.2 Fracture Toughness

Charpy Impact test is used to determine the toughness of the composite material. Tests are carried out to determine the quantity of energy that is being absorbed by the material before failure by using ASTM standard (**ASTM E23**)

Test samples are prepared as per the standard with a dimension of 10mm * 10mm * 55m with 'U' notch with depth of 2mm at the middle section of the sample

Sl.No	% of Reinforcement	Fracture Toughness (J/cm²)
1	AL7475	16
2	AL7475+2%NbC	11.8
3	AL7475+4%NbC	9.2
4	AL7475+6%NbC	8.4
5	AL7475+8%NbC	6.4
6	AL7475+10%NbC	7.2

Table 4. Fracture Toughness for AL7475 and AL7475/NbC composites.

Sl No	% of Reinforcement	Fracture Toughness (J/cm²)
1	AL7475	16
2	AL7475+2%MoS ₂	14.4
3	AL7475+4%MoS ₂	13
4	AL7475+6%MoS ₂	12.5
5	AL7475+8%MoS ₂	11.8
6	AL7475+10%MoS ₂	10.9

Table 5. Fracture Toughness for AL7475 and AL7475/ MoS₂ composites

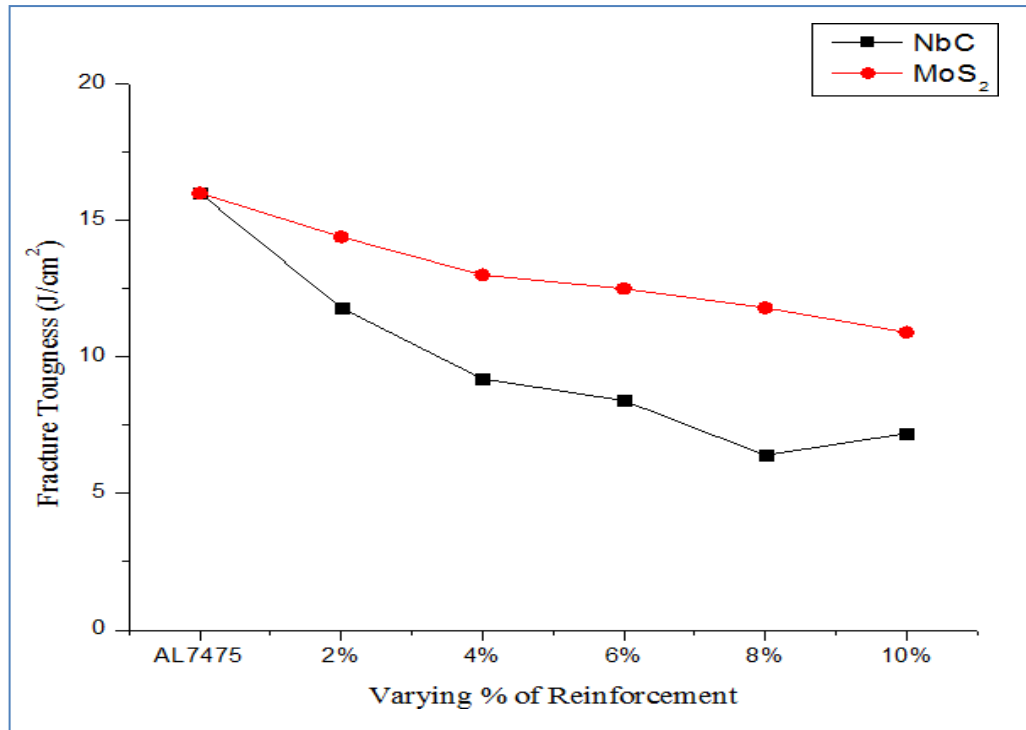


Fig 3.2 shows the fracture toughness of varying NbC and MoS₂ reinforcements

4. CONCLUSIONS

1. AL7475 + NbC+ MoS₂ composite were prepared successfully using liquid metallurgy techniques by incorporating the reinforcing particulates.
2. The obtained casting was uniform with very minimum amount of blowholes, Defects in the casting was done by visual inspection and it also reveals good bonding among matrix and reinforcement particles, which yields better load transfer ability from matrix to reinforcement material.
3. It was found that Brinell hardness of AL7475 + NbC+ MoS₂ is increased with increase in percentage of NbC & MoS₂ from 0 to 8% and an maximum value is reached upto 8%. Further increase to 10% results in decrease of hardness. This is due to improper bonding between the matrix and reinforcements.

4. It was found that fracture toughness of AL7475 + NbC+ MoS₂ is decreased with increase in percentage of NbC & MoS₂ from 0 to 8% and an minimum value is reached upto 8%. Further increase to 10% results in increase of fracture toughness. This is due to voids created between matrix and reinforcements.

REFERENCES

- [1]. M.K. Surappa, P. K. Rohatgi, Preparation and properties of cast aluminium-ceramic particle composites, *Journal of materials science*, 16(1981), p 983-993.
- [2]. J.W. Kaczmar, K .Pietrzak, W. Wlosinski, The production and application of metal matrix composite materials, *Journal of material processing technology*, 106(2000), p 106:58-67.
- [3]. R.M. Mohanty, K. Balasubramanian, S.K. Seshadri, Boron carbide-reinforced aluminium 1100 matrix composites: fabrication and properties, *Materials science and engineering*, 498(2008), p 42-52.
- [4]. K.H.W. Seah, J. Hemanth, S.C. Sharma, Mechanical properties of aluminium/quartz particulate composites cast using metallic and non metallic chills, *Materials and design*, 24(2003), p 87-93.
- [5]. M.A. Belger, P.K Rohatgi, N. Gupta, Aluminium composite casting incorporating used and virgin foundry sand as particle reinforcements, solidification processing of metal matrix composites-Rohatgi honorary symposium, TMS Annual Meeting (2006), p 95-104
- [6]. S. Sulaiman, M. Sayuti, R. Samin, Mechanical properties of the as cast quartz particulate reinforced LM6 alloy matrix composites, *Journal of materials processing technology*, 201(2008), p 731-735.
- [7]. T.R. Chapman, D.E. Niesz, R.T. Fox, T. Fawcett, Wear-resistant aluminium-boron-carbide cermets for automotive brake applications, *Wear*, 236 (1999), p81-87.

- [8]. W.R. Blumenthal, G.T. Gray, T.N. Claytor, Response of aluminium-infiltrated Niobium Carbide cermets to shock wave loading, *Journal of material science*, 29/17(1994), p 4567-4576.
- 9]. Feng YC, Geng L, Zheng PQ, Zheng ZZ, Wang GS. Fabrication and characteristic of Al-based hybrid composite reinforced with tungsten oxide particle and aluminum borate whisker by squeeze casting. *Materials & Design* 2008;29: 2023–6.
- [10]. Mohanty RM, Balasubramanian K, Seshadri SK. Boron carbide-reinforced aluminium 1100 matrix composites: fabrication and properties. *Material Science Eng. A* 2008; 498:42.
- [11]. A.Rafiq Siddiqui, Hussein A. Abdullah, Khamis R. Al-Belushi (2000); Influence of aging parameters on the mechanical properties of 6063 aluminium alloy, *Journal of Materials Processing Technology* Vol.102, pp. 234-240
- [12]. J.J. Gracio, F. Barlat, E.F. Rauch, P.T. Jones (2006); Artificial aging and shear deformation behaviour of 6022 aluminium alloy, *International Journal of Plasticity* Vol.20, pp. 427–445.
- [13]. G. Mrówka-Nowotnik, J. Sieniawski, A. Nowotnik (2006) Tensile properties and fracture toughness of heat treated 6082 alloy, *JAMME*, Vol.17, pp.105-108
- [14]. Majid Vaseghi, Hyoung Seop Kim (2012) A combination of severe plastic deformation ageing phenomena in Al–Mg–Si Alloys, *Materials and Design*, Vol.36, pp-736-740.
- [15]. S. Rajasekaran, N. K. Udayashankar and Jagannath Nayak (2012) T4 and T6 Treatment of 6061 Al-15vol.% SiCp Composite, *International Scholarly Research Network*, Vol-2012, pp, 1-5.