



Exploring the possibilities to characterize the soft tissue using Acoustic emission waveforms

Yashbir Singh, Weichih Hu, Alfredo Illanes and Michael Friebe

EasyChair preprints are intended for rapid dissemination of research results and are integrated with the rest of EasyChair.

March 16, 2019

Exploring the possibilities to characterize the soft tissue using Acoustic emission waveforms

Yashbir Singh¹, Weichih Hu¹, Alfredo Illanes² and Michael Friebe²

¹ Department of Biomedical Engineering, Chung Yuan Christian University, Zhongli, Taiwan

²Electrical Engineering and Information Technologies, Otto-von-Guericke-University, Magdeburg, Germany

Abstract— Minimal invasive device insertion into the soft tissue is a very important medical approach that is helpful for local drug delivery, biopsy, regional anesthesia, blood sampling, and radiofrequency ablation. These methods need to introduce the MID inside the body for exploring the tissue texture pattern. We propose a novel approach by acquiring acoustic emission data from the proximal end of the MID for the tissue using phase angle, power spectral to identify the texture. By performing these signal processing approach to the soft tissue, the pattern of the tissue can be understood. The result shows a new study to obtain soft tissue texture information.

Keywords— Minimal invasive device, Acoustic emission, Tissue Texture, Non-invasive sensors.

I. INTRODUCTION

Nowadays, physicians are facing the problem to determine the abnormal tissue such as ovarian cyst or tumor in the body, which is very challenging. Numerous recent clinical practices are involved in soft tissue treatment and some local therapies. Advanced technologies are used in the laparoscopic surgery that allows finding the accurate information of the soft tissue characteristics [1].

There are many devices available in the market such as biopsy needle, catheter and guidewire for regional anesthesia, and brachytherapy which considered as a medical interventional device (MID). These applications, needle and catheters have to penetrate into the soft tissue to find the texture information of the soft tissue. The effectiveness of the diagnosis is depended on the accuracy of the penetration of the device into the soft tissue. Medical studies have revealed that misplacement of the needle insertion into the soft tissue will be a problematic [2,3]. Nowadays, through the MID insertion procedure has become a very significant way to evaluate the texture of the tissue because a variety of pathological conditions in humans directly or indirectly involve remodeling or regenerating the collagenous framework in tissue. Accurate placement of MID is very important because biopsy of an unintended tissue region can effect in misdiagnosis.

Many studies suggest that the inappropriate MID insertion can be caused by many factors like tissue in homogeneity, tissue anisotropy, anatomical obstructions. A MID has assumed as the rigid rod and the soft tissue has elasticity property to deform under the external forces and to release stored energy to drive the function of other tissues. MID penetration method is divided into pre-puncture, puncture and post-puncture phases. Soft tissue deformation happens at the pre-puncture and post puncture phases [4,5,6]. There are numerous irregular gaps inside the tissue and the tissue is simply compressible under the external loads. When MID goes into the soft tissue leads to the volume change with its deformation. This volume change of the tissue can be used to measure the deformation. Tissue deformation includes three cases which are the displacement of the tissue, comparative sliding of multilayer soft tissue and motions of the organs. usually, soft tissue contains three layers which are skin, muscle, and fat. The inhomogeneous characteristic allow the adjective layers to slide with each other under the asymmetrical forces [7]. The connection between needle deflection and needle geometry are discussed [8]. In general, when a tensile event happens, the sides of the deformation move away from each other, and consequently, a few energy transmits in the waveforms which means acoustic emission waveform emitted by a tensile event.

However, it is very hard to calculate the changed volume of soft tissue but we are trying to get some information about the tissue texture. The impact of the research presented in this paper lies in its contribution to extract the texture comparison information of the soft tissue using the audio signal.

II. METHOD

In this research, we setup the experiment for MID which was an 18G 200 mm length biopsy needle with the needle core (ITP, Germany), placed inside a flushed 1.9 F micro catheter of 1.5 m length were implemented. A gelatin phantom was filled with different fruits such as grape, persimmon, breast and, liver of chicken to perform the analysis (Fig.1). We attached a microphone to the proximal end of the needle to the soft tissue (Gelatin phantom filled with

fruits) using testing machine (Zwicki, Zwick Gmb H &Co.KG,Ulm).

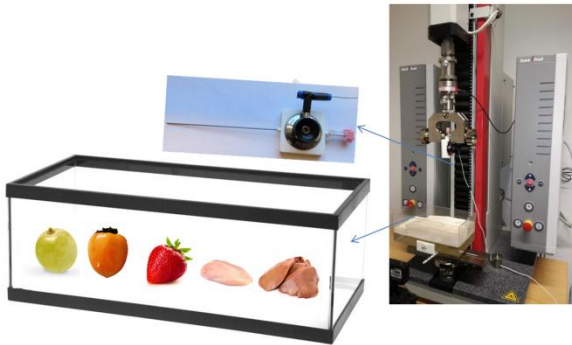


Fig.1 Experiment setup (Illanes et al,2018)

Penetration velocity rate of the needle was 3mm/s, recorded 80 audio signals in WAV format with a sampling frequency of 44672Hz because it is very common sampling frequency in the digital audio system. Insertion of the needle timing and exit timing were observed. We performed the filtration process to obtain the filtered audio signal from the raw audio signal. (Fig.2). In this study, we focused on the signal processing to find the texture of the tissue using the audio signal. We used the biopsy needle to get the match in the different structures of tissue. The experimental tissues were persimmon, grape, breast and liver of chicken with different texture of the tissue. Since It is very important to implement a signal processing approach to get more hidden information which is not possible by naked eyes.

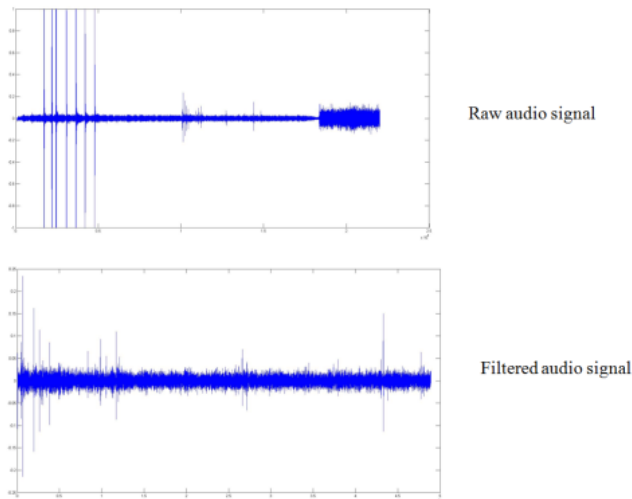


Fig.2 Original and filtered audio signal

The *Matlab R2015b* is used to perform signal processing for the audio signal analysis. The algorithm used on filtered audio signal for the digital analysis of amplitude, frequency,

phase angle pattern detection among the tissue successfully [9,10,11].Finally, we performed cross-correlation to determine inter-observer and intra-observer variability. The objective of this research is to evaluate tissue texture when the needle passes into dissimilar tissue structures.

III. RESULTS

In this section, we observed more friction dynamics in the breast and liver of chicken at the time of needle penetration rather than fruits, obtained different elasticities of tissue structures which is different patterns of the soft tissue. We particular made the block on the graph where is the more different peaks variation clearly differentiate from other tissue (Fig.3). Numerous research suggests the muscle tissue is composed out of different fibre strands and fruit tissue have different. These kind of alignment will lead to a directed light distribution with the fibre direction in the piece of tissue. After performing the power spectral, phase angle among the tissues. Power spectral graph represents the difference among the tissue which is shown in the graph (Fig.3). Though, frequency distribution is important for human perception. These kinds of information may be acquired by computation power spectrum.

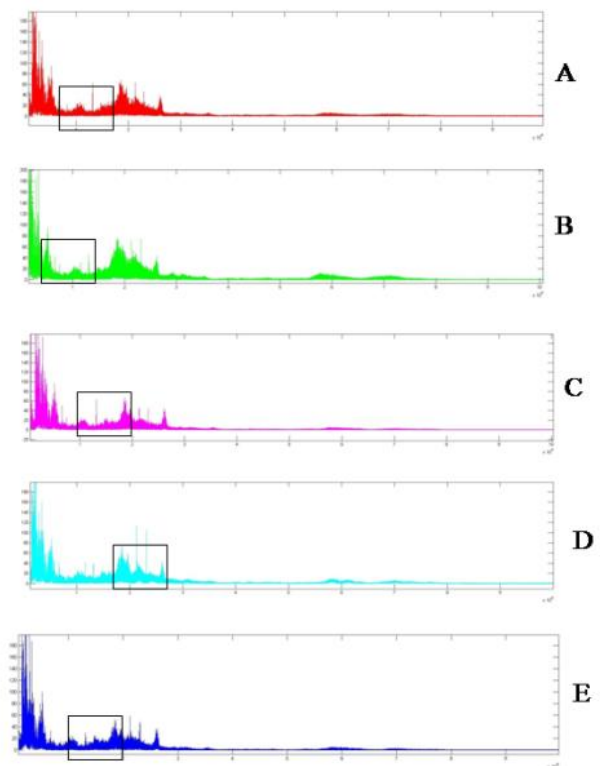


Fig.3Power spectral Analysis of the various tissues.

Phase angle graph is also representing the difference among the tissues, we have shown in the graph (Fig.4). In the graph, we have made the block where is the dense area which is fibre that also differentiate the tissue pattern to each other. The phase angle ($p(\alpha, \varphi', \theta')$) of the soft tissues have strong deviations at the incident of penetration and scattering angles (φ', θ'). MID insertion is directed into fibre direction that can propagate to get the inside organization of the tissue. We compared all results of the soft tissue texture pattern. Our comparison reveals differences among the soft tissues that can be seen pattern consistency of the data.

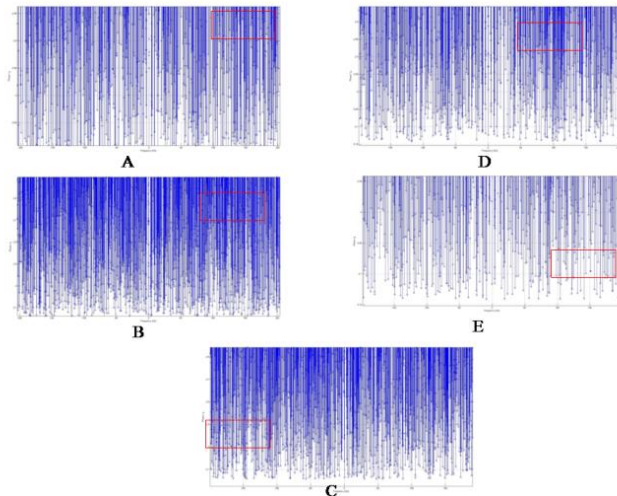


Fig.4 Phase angle of the different tissues.

Finally, we performed the cross-correlation to get the pattern among the tissue which is shown in the graph as well (Fig.5). Here, we have shown the graph only a few signal patterns for the representation purpose. Upper and lower part of the graph peaks are different that shows the variability of the signal at different points (Fig.5). We obtained the angle variation that strongly dependent on the incident direction.

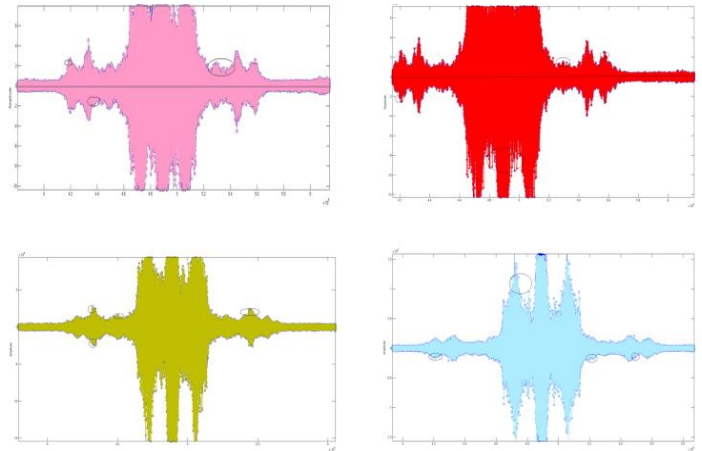


Fig.5 Cross Correlation among the tissues

This study shows an interesting approach to get fruitful information between the MID and tissue. This experiment was performed in a laboratory controlled physiological environment. We strongly believe that this research would play a very significant role in medical science.

IV. CONCLUSIONS

This research suggests that it is a novel method to extract the helpful information of the Medical interventional device. We used advanced signal processing algorithms to get the in-homogeneities and elasticity properties of that tissues and obtained the texture difference in between. As we know, In the clinical world where digital pathology is becoming more popular, automatic classification could be a very helpful tool for the pathologist. and it could provide a new direction to the medical science.

ACKNOWLEDGMENT

This work was supported by Deutscher Akademischer Austauschdienst (DAAD), Germany. We thank to INKA research (OVGU, Magdeburg, Germany) Group for the cooperation .

CONFLICT OF INTEREST

We have no conflicts of interest relationship with any companies or commercial organizations.

REFERENCES

1. Horgan, S., & Vanuno, D. (2001). Robots in laparoscopic surgery. *Journal of Laparoendoscopic & Advanced Surgical Techniques*, 11(6), 415-419.
2. Abolhassani, N., & Patel, R. (2006, August). Deflection of a flexible needle during insertion into soft tissue. In Engineering in Medicine and Biology Society, 2006. EMBS'06. 28th Annual International Conference of the IEEE (pp. 3858-3861). IEEE.
3. Illanes, A., Boese, A., Maldonado, I., Pashazadeh, A., Schaufler, A., Navab, N., & Friebe, M. (2018). Novel clinical device tracking and tissue event characterization using proximally placed audio signal acquisition and processing. *Scientific reports*, 8(1), 12070.
4. van Gerwen, D. J., Dankelman, J., & van den Dobbelsteen, J. J. (2012). Needle–tissue interaction forces—A survey of experimental data. *Medical engineering & physics*, 34(6), 665-680.
5. Dedong, G. A. O., Yong, L. E. I., & Bin, Y. A. O. (2013). Analysis of Dynamic Tissue Deformation during Needle Insertion into Soft Tissue. *IFAC Proceedings Volumes*, 46(5), 684-691.
6. Mostaço-Guidolin, L. B., Ko, A. C. T., Wang, F., Xiang, B., Hewko, M., Tian, G., ... & Sowa, M. G. (2013). Collagen morphology and texture analysis: from statistics to classification. *Scientific reports*, 3, 2190.
7. Lee, H. K., Chung, J., Chang, S. I., & Yoon, E. (2011). Real-time measurement of the three-axis contact force distribution using a flexible capacitive polymer tactile sensor. *Journal of Micromechanics and Microengineering*, 21(3), 035010.
8. Okamura, A. M., Simone, C., & O'leary, M. D. (2004). Force modeling for needle insertion into soft tissue. *IEEE transactions on biomedical engineering*, 51(10), 1707-1716.
9. Boedeker, K. L., & McNitt-Gray, M. F. (2007). Application of the noise power spectrum in modern diagnostic MDCT: part II. Noise power spectra and signal to noise. *Physics in Medicine & Biology*, 52(14), 4047.
10. Kienle, A., Forster, F. K., & Hibst, R. (2001). Influence of the phase function on determination of the optical properties of biological tissue by spatially resolved reflectance. *Optics letters*, 26(20), 1571-1573.
11. Cheong, W. F., Prah, S. A., & Welch, A. J. (1990). A review of the optical properties of biological tissues. *IEEE journal of quantum electronics*, 26(12), 2166-2185.

Author: Mr. Yashbir Singh
 Institute: Chung Yuan Christian University
 City: Zhongli
 Country: Taiwan
 Email: yashbir143@gmail.com

Author: Prof. Dr. Weichih Hu
 Institute: Chung Yuan Christian University
 City: Zhongli
 Country: Taiwan
 Email: weichihhu@cycu.edu.tw

Author: Dr. Alfredo Illanes
 Institute: OvG University
 Street: Rötgerstraße 9
 City: Magdeburg
 Country: Germany
 Email: alfredo.illanes@ovgu.de

Corresponding Author: Prof. Dr Michael Friebe
 Institute: OvG University
 Street: Rötgerstraße 9
 City: Magdeburg
 Country: Germany
 Email: michael.friebe@ovgu.de